

# International Call Plans

There are two plans available for international calls:

## Peak/Off Peak Plan

Ideal for people who make most of their international calls during weeknights and weekends. The Peak/Off Peak Plan also offers great capped calling rates to many countries.

**Peak** - 8am - 6pm Monday to Friday.

**Off Peak** - 6pm - 8am Monday to Friday, all day weekends and national statutory holidays.

## Flat Rate Plan

For people who want to make international calls at any time of the day.

## Capped Calls

Talk for up to 2 hours and pay **no more** than the capped rate! Calls must start within an off-peak period to be eligible for capping (except the Flat Rate plan). Standard rates continue after 2 hours.

Capped rates apply to direct dial landline calls. They do not apply to data connections.

To choose your TelstraClear call plan call 0508 888 800 or visit [www.telstraclear.co.nz](http://www.telstraclear.co.nz)

## International Call Plans

Call to:	Peak/Off Peak Plan			Flat Rate Plan
	Peak Rate per min	Off Peak rate per min	Off Peak Cap Up to 2 hrs	24 hr Rate per min
Australia	\$0.65	\$0.49	\$2.75	\$0.25
Australia Mobile	\$0.99	\$0.59	n/a	\$0.79
Canada	\$0.65	\$0.49	\$5.75	\$0.25
China	\$1.59	\$1.09	\$25.00	\$0.49
Cook Islands	\$1.39	\$1.29	n/a	\$1.34
Fiji	\$1.24	\$0.85	n/a	\$0.75
France	\$1.15	\$0.89	\$5.75	\$0.39
Germany	\$1.15	\$0.89	\$5.75	\$0.39
Hong Kong	\$0.65	\$0.54	\$16.00	\$0.39
India	\$1.69	\$1.29	n/a	\$0.89
Indonesia	\$1.59	\$1.09	n/a	\$1.34
Ireland	\$0.65	\$0.49	\$5.75	\$0.25
Italy	\$1.15	\$0.89	\$5.75	\$0.39
Japan	\$0.99	\$0.69	\$18.00	\$0.39
Malaysia	\$1.04	\$0.89	\$18.00	\$0.49
Netherlands	\$1.15	\$0.89	\$5.75	\$0.39
Philippines	\$1.14	\$0.99	n/a	\$1.07
Samoa	\$0.99	\$0.89	n/a	\$0.94
Singapore	\$0.99	\$0.69	\$18.00	\$0.39
South Africa	\$1.49	\$0.89	\$10.00	\$0.69
Sweden	\$1.15	\$0.89	\$16.00	\$0.49
Switzerland	\$1.19	\$0.89	\$5.75	\$0.49
Thailand	\$1.59	\$1.09	n/a	\$1.34
Tonga	\$1.49	\$1.39	n/a	\$1.44
U.K.	\$0.65	\$0.49	\$5.75	\$0.25
U.K. Mobile	\$0.99	\$0.59	n/a	\$0.79
U.S.A.	\$0.65	\$0.49	\$5.75	\$0.25

Calls to mobile phones in many countries are charged at different rates to the above. For a full listing of rates to every country, see [www.telstraclear.co.nz](http://www.telstraclear.co.nz)

National, Home to Mobile and International calls



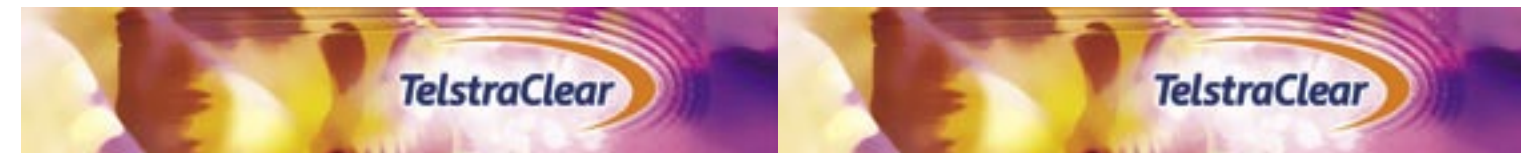
### Residential Customer Care

Phone TollFree 0508 888 800  
Fax TollFree 0508 888 801

### Freepost

TelstraClear, Freepost 4768,  
Private Bag 92143, Auckland.

# Call Plans



TCR012 05/05

[www.telstraclear.co.nz](http://www.telstraclear.co.nz)

[www.telstraclear.co.nz](http://www.telstraclear.co.nz)

# National and Home to Mobile Call Plans

At TelstraClear we will continue to work with you to look for better ways for you to communicate

We offer a choice of National and Home to Mobile calling plans. All National calling plans also feature great "capped" rates.

## Peak/Off Peak Plan

Perfect for customers who make most of their calls during weeknights and weekends.

**Peak** - 8am - 6pm Monday to Friday.

**Off peak** - 6pm - 8am Monday to Friday, all day weekends and national statutory holidays.

## Flat Rate Plan

Ideal for customers making a lot of calls during weekdays.

## Regional Plan

A great plan for customers making lots of calls within their phone book calling area.

## Rates

Calls are rounded up to the nearest minute. All prices include GST.

## Capped Calls

Talk for up to 2 hours and pay **no more** than the capped rate! Calls must start within an off-peak period to be eligible for capping (except the Flat Rate plan). Standard rates continue after 2 hours.

Capped rates apply to direct dial landline calls. They do not apply to data connections.

## Regional Plan Map



## National Plans

### Peak/Off Peak Plan

Call to:	Peak Rate Per Min	Off Peak Rate Per Min
Anywhere in New Zealand	45c	19c
Off Peak Cap (for up to 2 hours)	n/a	\$2.75

### Flat Rate Plan

Call to:	24 hour rate per min
Anywhere in New Zealand	25c
Anytime Cap (for up to 2 hours)	\$4.50

### Regional Plan

Call to:	Peak Rate Per Min	Off Peak Rate Per Min
Phone book calling area	8c	7c
Adjacent phone book calling area	29c	15c
Rest of New Zealand	60c	22c
Off Peak Cap (for up to 2 hours)	n/a	\$2.75

## Regions

Refer to the front of your Telephone Book for exact calling areas.

**NB:** Nelson and Marlborough includes Nelson and Bays and Marlborough calling areas.

*Calls between Wellington and Kapiti Coast are free to TelstraClear residential cable network customers.*

## Home to Mobile Plans

### Peak/Off Peak plan

Call to:	Peak Rate Per Min	Off Peak Rate Per Min
All New Zealand Mobiles	85c	45c

### Flat Rate plan

Call to:	24 hour rate per min
All New Zealand Mobiles	71c

*TelstraClear residential cable network customers will only pay 45c per minute at any time for Home to Mobile calls to an 029 number.*

## Contact TelstraClear

*For more information on any of our services or any questions please contact TelstraClear Customer Care.*

### Residential Customer Care

Phone TollFree 0508 888 800

Fax TollFree 0508 888 801

### Freepost

TelstraClear, Freepost 4768

Private Bag 92143, Auckland

[www.telstraclear.co.nz](http://www.telstraclear.co.nz)